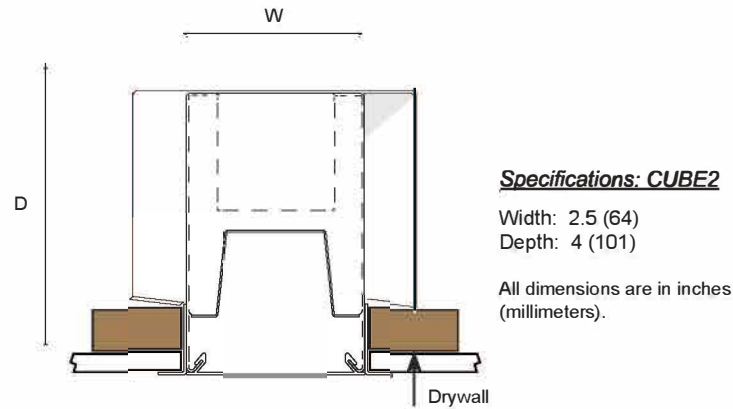


CUBE2, CUBE4-CW90

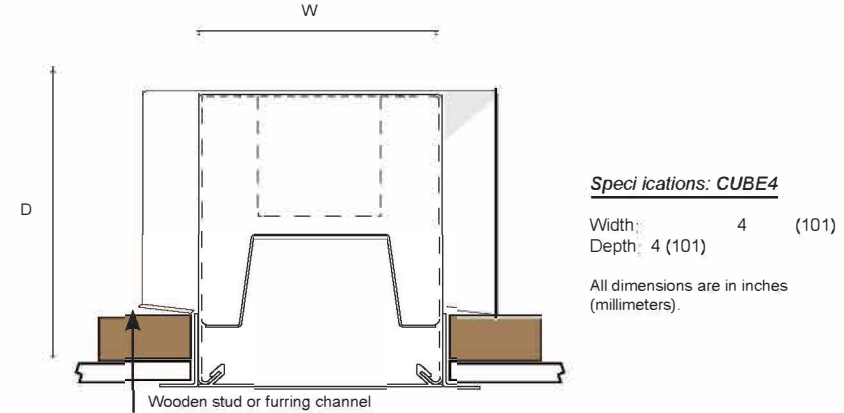
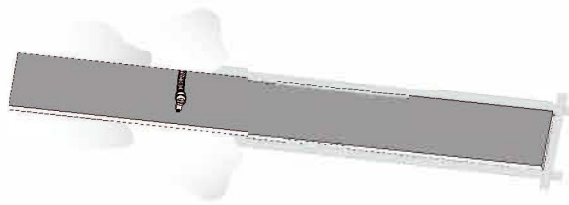
RECESSED DRYWALL MOUNT INSTALLATION INSTRUCTIONS

Revised 12.13.2018



PART LIST

A: LED module plate B: Lens
 C: BX cable connector D: Access plate
 E: Safety bracket screw F: Safety bracket



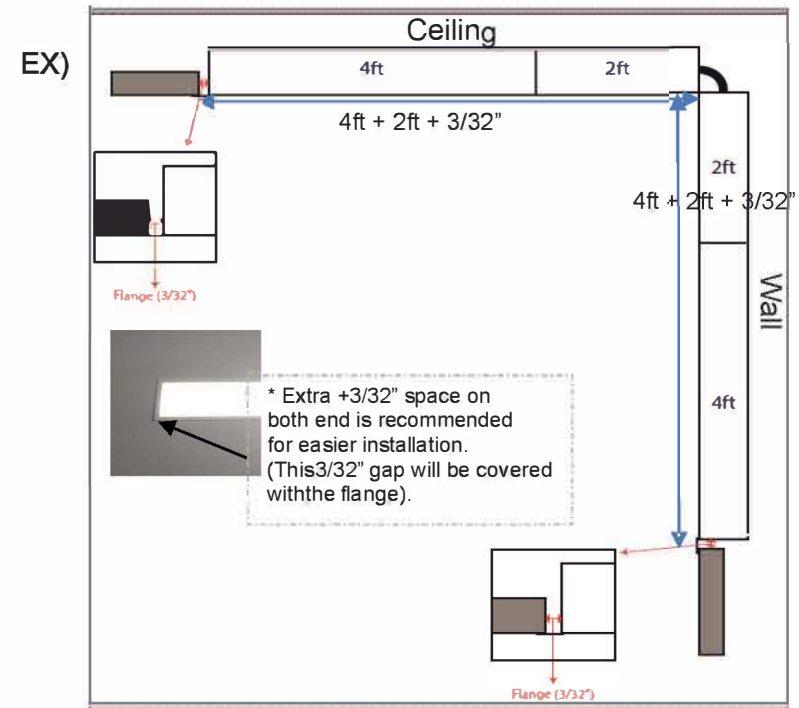
Make opening on ceiling to wall drywall according to dimensions below:

CUBE2

(2ft) : 24-3/32" x 2-5/8"
 (3ft) : 36-3/32" x 2-5/8"
 (4ft) : 48-3/32" x 2-5/8"
 (6ft) : 72-3/32" x 2-5/8"
 (8ft) : 96-3/32" x 2-5/8"

CUBE4

(2ft) : 24-3/32" x 4-1/8"
 (3ft) : 36-3/32" x 4-1/8"
 (4ft) : 48-3/32" x 4-1/8"
 (6ft) : 72-3/32" x 4-1/8"
 (8ft) : 96-3/32" x 4-1/8"



- 1 -



866.471.7711
 utopialighting.com
 info@utopialighting.com

Contractor is responsible for adequately reinforcing ceilings to support luminaire weight. Utopia Lighting accepts no responsibility for inadequately reinforced ceilings. The information contained in this drawing is the sole property of Utopia Lighting. Any reproduction in part or whole is prohibited and warranty voided.

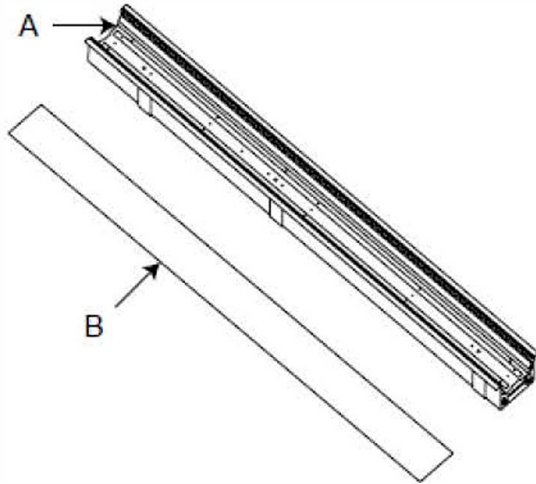
WARNING:



RISK OF FIRE AND ELECTRICAL SHOCK. FIXTURE MUST BE INSTALLED BY A QUALIFIED ELECTRICIAN ONLY IN ACCORDANCE WITH NATIONAL, LOCAL BUILDING AND ELECTRICAL CODES. DISCONNECT POWER AT ELECTRICAL PANEL BEFORE SERVICING.

INSTALLATION FOR INDIVIDUAL

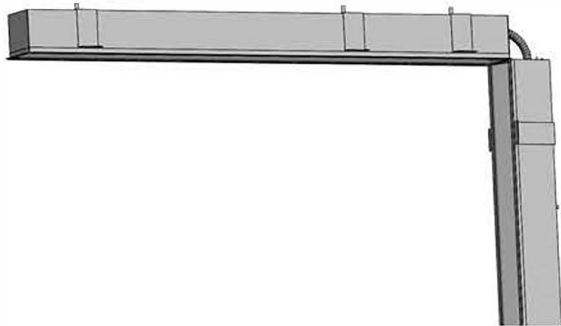
1) Remove Lens (B) and LED module plate (A).



2) Follow any methods for continuous run in the following pages.

- Method 1
- Method 2
- Method 3

3) Reinstall module plate and lens.



CUBE2, CUBE4-CW90

RECESSED DRYWALL MOUNT INSTALLATION INSTRUCTIONS

Revised 12.13.2018

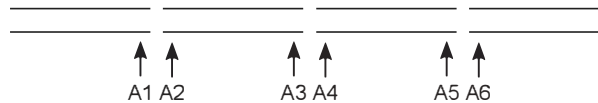
INSTALLATION FOR CONTINUOUS ROW

TOOL(S) NEEDED:

Option 1) Cordless drill and an elbow or L-shape adapter with Philips Insert Bit extension.

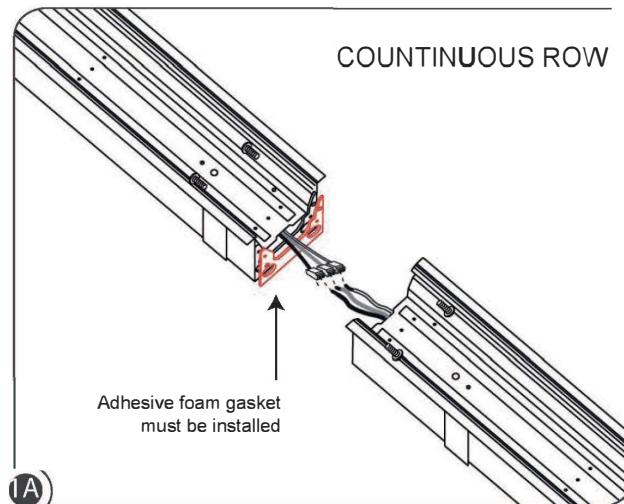


Option 2) Flexible Screwdriver with Philips Insert Bit.



Continuous Row

Align continuous row fixtures in numerical order under the same alphabet family.



- 1) Make wiring connection from each fixture power supply wires together.
- 2) Align fixtures and screw together with 4 screws(H).



CUBE2, CUBE4-CW90

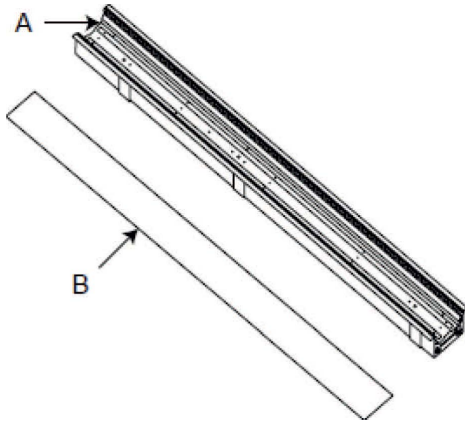
RECESSED DRYWALL MOUNT INSTALLATION INSTRUCTIONS

Revised 12.13.2018

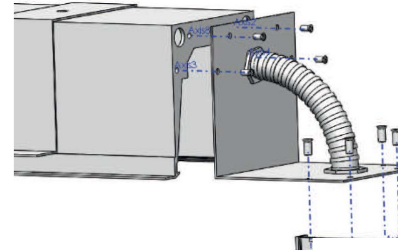
INSTALLATION FOR CONTINUOUS ROW

Method 1:

1) Remove Lens (B) and LED module plate (A)

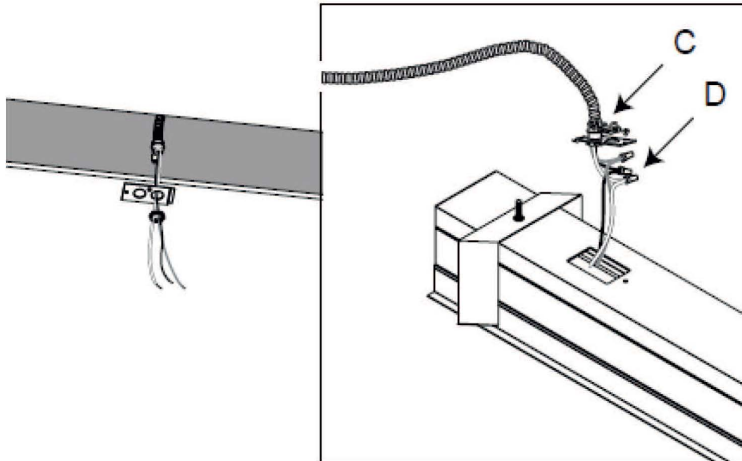


2) Pre-install the connector from outside on both perpendicular end.

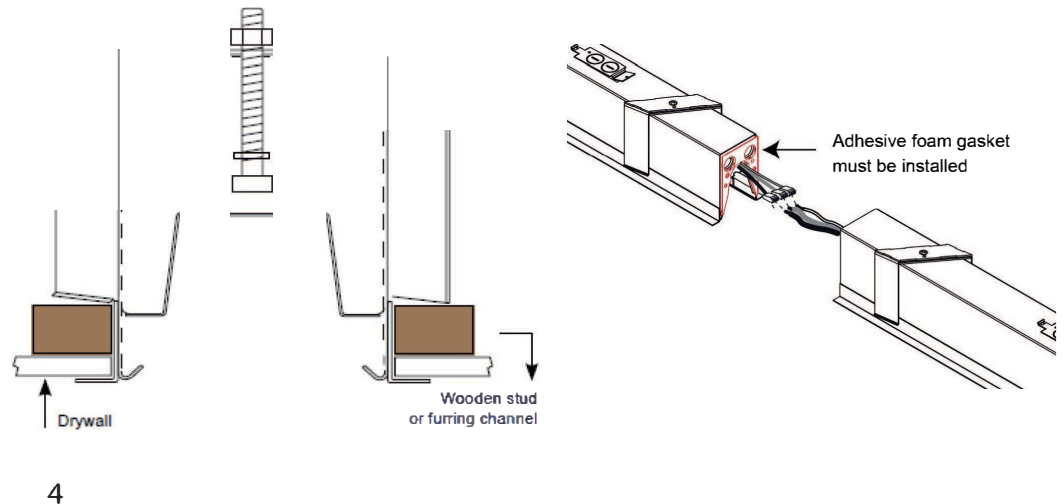


NOTE:
Connect each disconnectors of Male and Female with the same color of wires through the whip.

3) Install BX cable connector (C) to access plate (D).
Wire BX cable wires to Fixture wires.



4) Align the perpendicular set to pre-cut hole on drywall and install.



866-471-7711
utopialighting.com
info@utopialighting.com

Contractor is responsible for adequately reinforcing ceilings to support luminaire weight. Utopia Lighting accepts no responsibility for inadequately reinforced ceilings. The information contained in this drawing is the sole property of Utopia Lighting. Any reproduction in part or whole is prohibited and warranty voided.

WARNING:

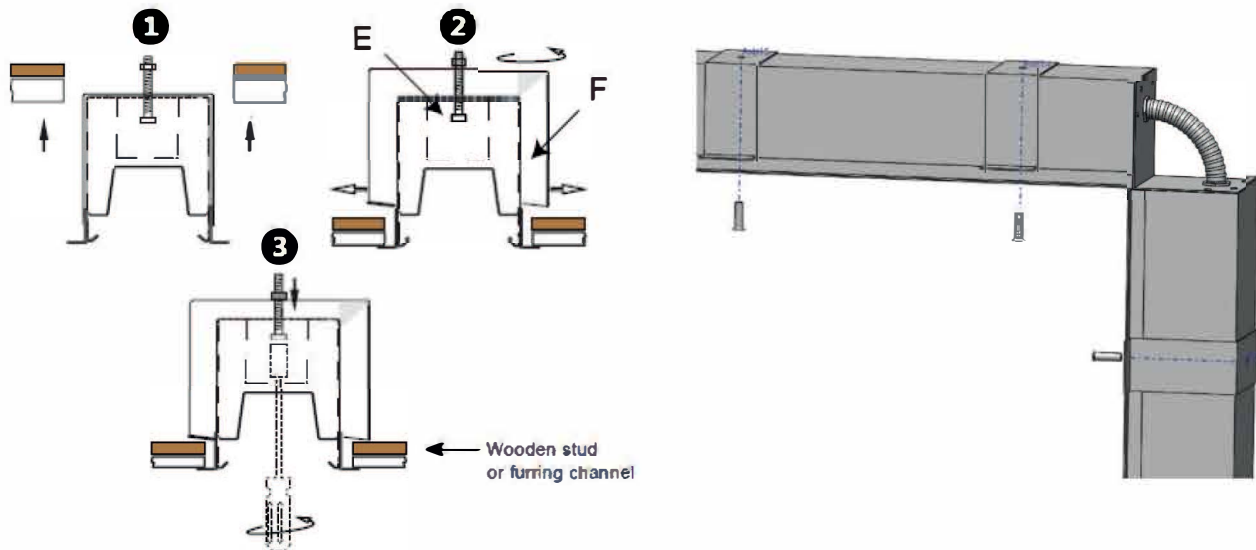


RISK OF FIRE AND ELECTRICAL SHOCK. FIXTURE MUST BE INSTALLED BY A QUALIFIED ELECTRICIAN ONLY IN ACCORDANCE WITH NATIONAL, LOCAL BUILDING AND ELECTRICAL CODES. DISCONNECT POWER AT ELECTRICAL PANEL BEFORE SERVICING.

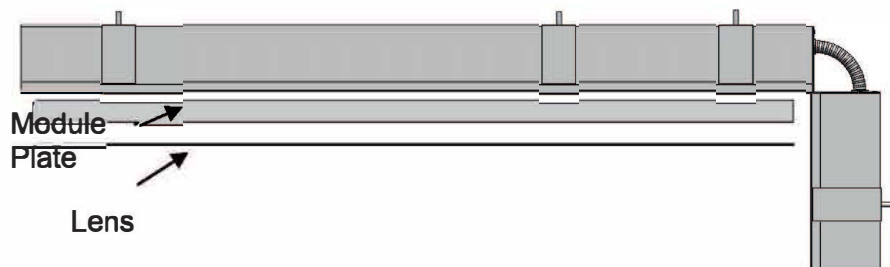
CUBE2, CUBE4-CW90 RECESSED DRYWALL MOUNT INSTALLATION INSTRUCTIONS

INSTALLATION FOR CONTINUOUS ROW

- 5) Push safety bracket screw (E) up to rotate safety brackets (F) once bracket is correctly align, then tighten screws to lock fixture into drywall ceiling and wall.



- 6) Reinstall LED module plate and lens.

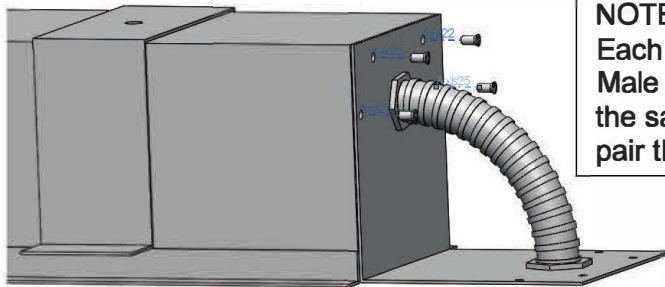


- 5 -

INSTALLATION FOR CONTINUOUS ROW

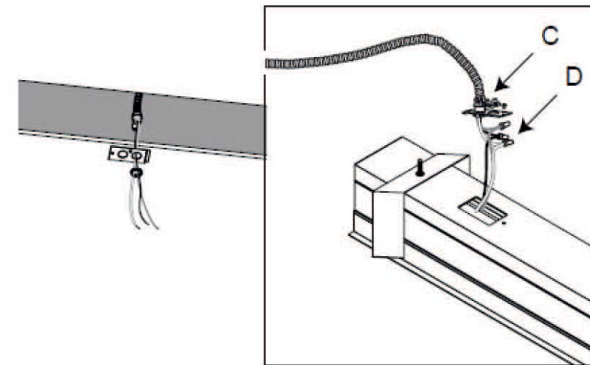
Method 2:

- 1) Pre-install ceiling end of perpendicular fixture. with the connector from outside.

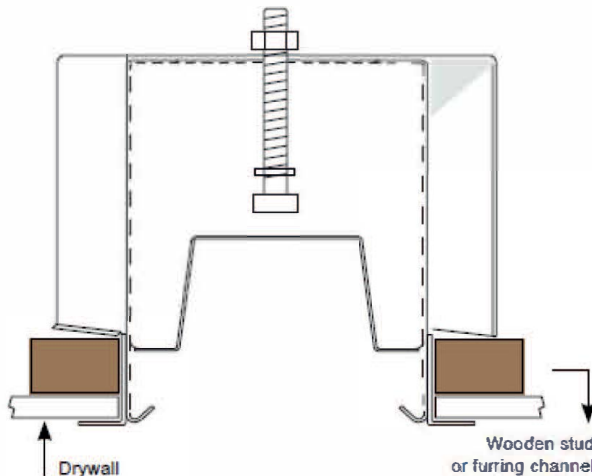


NOTE:
Each disconnectors of Male and Female containing the same colors of wires should pair through the flex whip.

- 2) Install BX cable connector (C) to access plate (D). Wire BX cable wires to fixture wires.

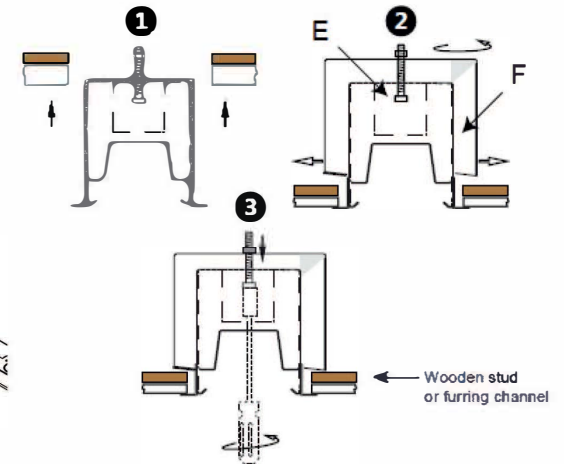
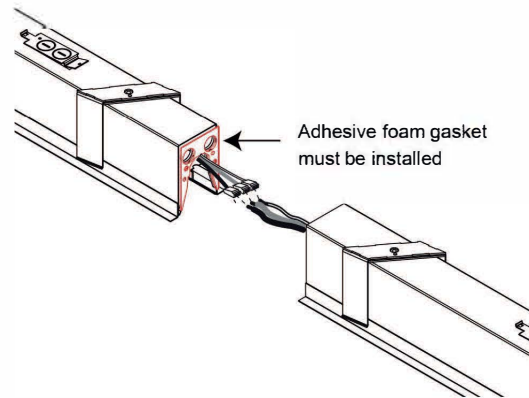
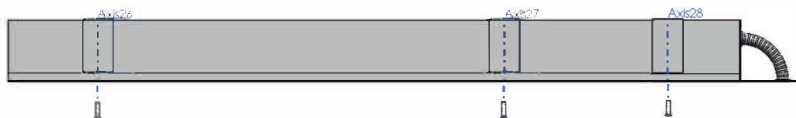


- 3) Align horizontal fixture to pre-cut hole on the ceiling drywall (F) and insert fixture.

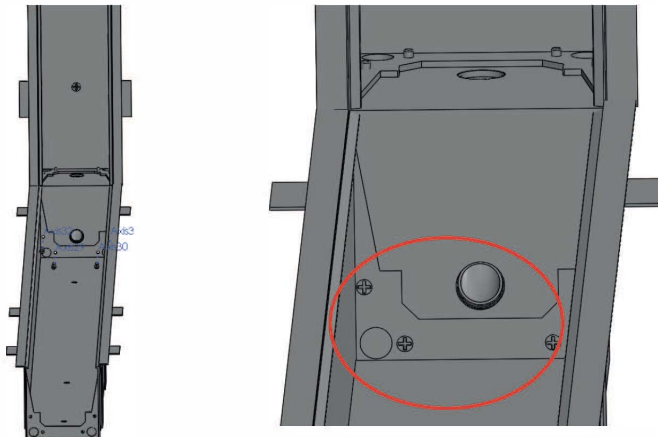


INSTALLATION FOR CONTINUOUS ROW

- 4) Push safety bracket screw (E) up to rotate safety brackets once bracket is correctly align, then tighten screw to lock fixtures into ceiling drywall.



- 5) Install vertical wall fixture and screw onto the connector from inside.

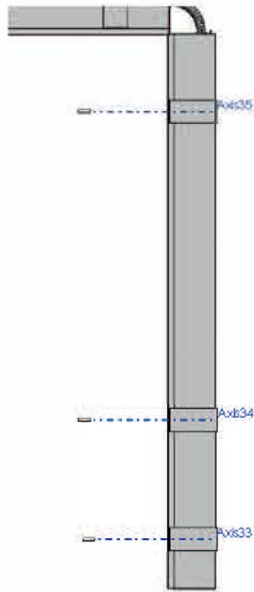


CUBE2, CUBE4-CW90

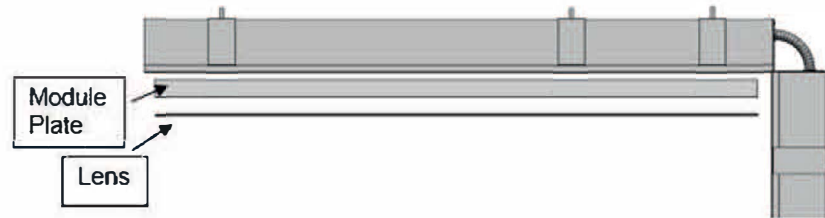
RECESSED DRYWALL MOUNT INSTALLATION INSTRUCTIONS

INSTALLATION FOR CONTINUOUS ROW

6) Repeat step #3 and #4 for the vertical fixture.



7) Reinstall LED module plate and lens.



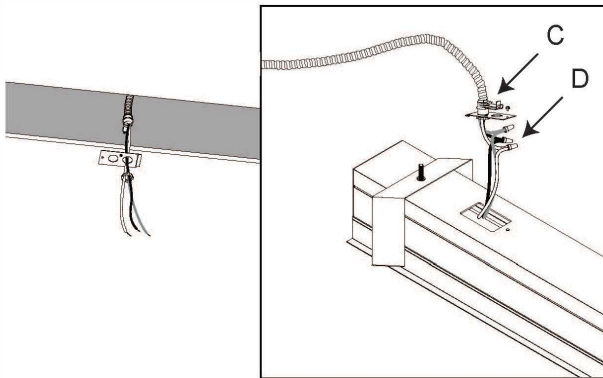
CUBE2, CUBE4-CW90

RECESSED DRYWALL MOUNT INSTALLATION INSTRUCTIONS

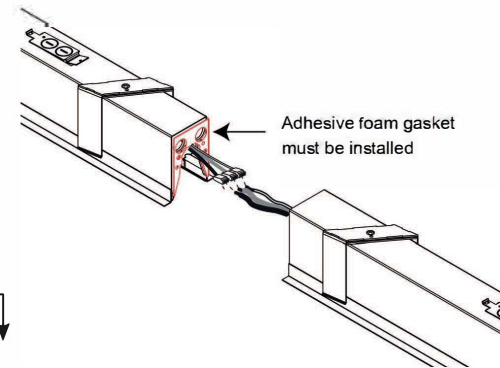
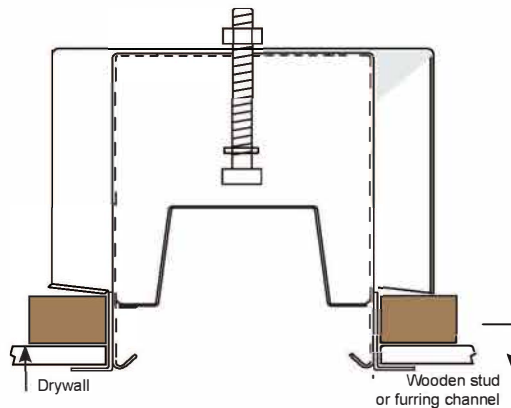
INSTALLATION FOR CONTINUOUS ROW

Method 3:

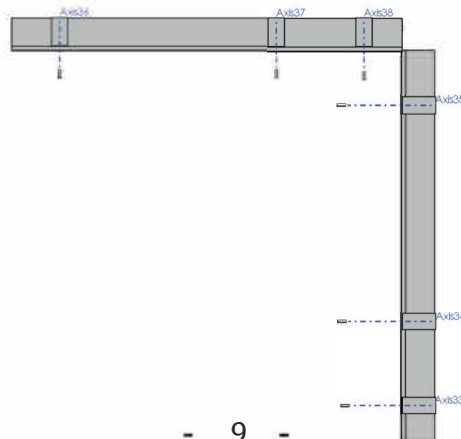
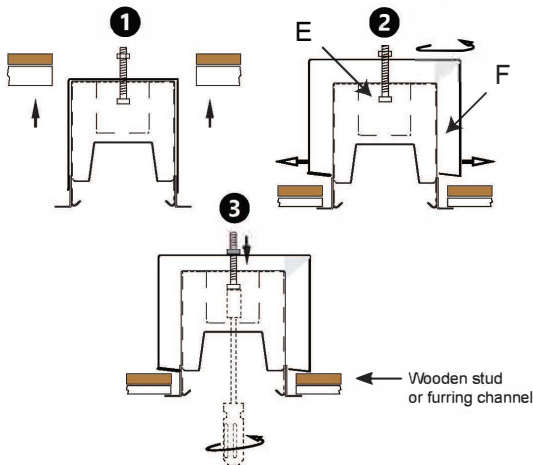
- 1) Install BX cable connector (C) to access plate (D).
Wire BX cable wires to fixture wires.



- 2) Align both horizontal and vertical fixture to pre-cut hole on Drywall and insert fixtures perpendicularly.



- 3) Push safety bracket screw (E) up to rotate safety brackets (F). Once bracket is correctly aligned, tighten screw to lock fixtures into drywall both ceiling and wall.



- 9 -



866-471-7711
utopialighting.com
info@utopialighting.com

Contractor is responsible for adequately reinforcing ceilings to support luminaire weight. Utopia Lighting accepts no responsibility for inadequately reinforced ceilings. The information contained in this drawing is the sole property of Utopia Lighting. Any reproduction in part or whole is prohibited and warranty voided.

WARNING:

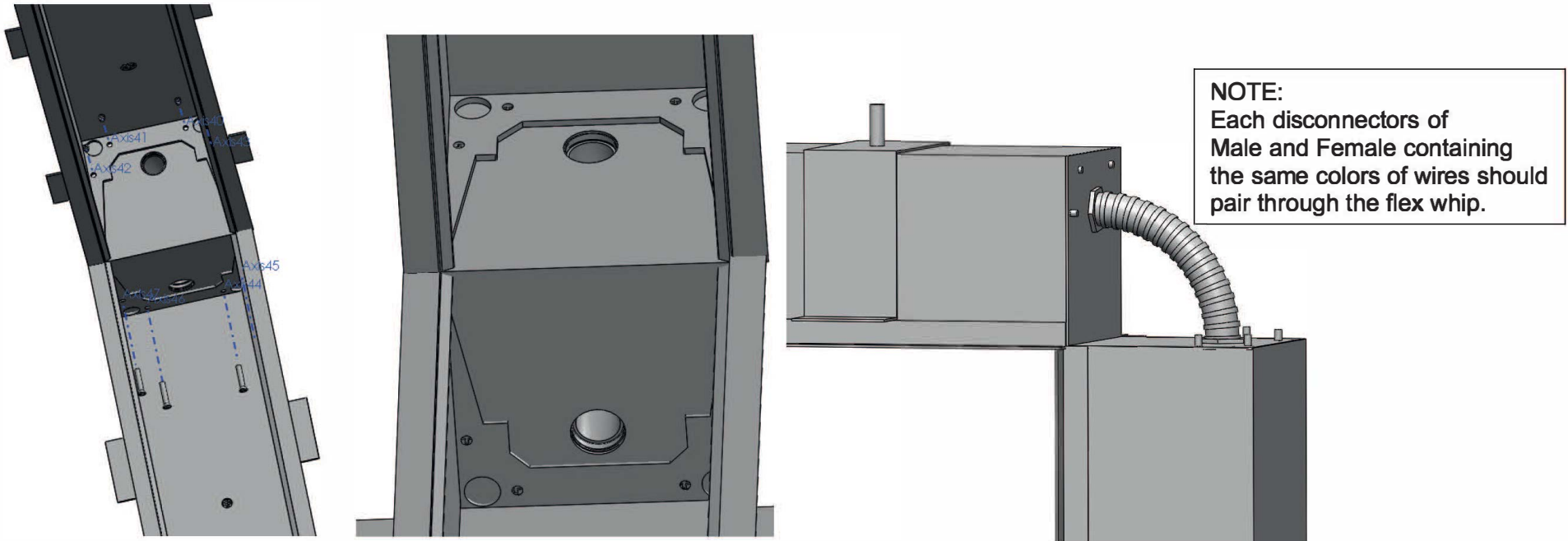


RISK OF FIRE AND ELECTRICAL SHOCK. FIXTURE MUST BE INSTALLED BY A QUALIFIED ELECTRICIAN ONLY IN ACCORDANCE WITH NATIONAL, LOCAL BUILDING AND ELECTRICAL CODES. DISCONNECT POWER AT ELECTRICAL PANEL BEFORE SERVICING.

CUBE2, CUBE4-CW90 RECESSED DRYWALL MOUNT INSTALLATION INSTRUCTIONS

INSTALLATION FOR CONTINUOUS ROW

4) Install the connector at the perpendicular end (ceiling to wall) from inside.



5) Reinstall LED module plate and lens.



- 10 -



866-471-7711
utopialighting.com
info@utopialighting.com

Contractor is responsible for adequately reinforcing ceilings to support luminaire weight. Utopia Lighting accepts no responsibility for inadequately reinforced ceilings. The information contained in this drawing is the sole property of Utopia Lighting. Any reproduction in part or whole is prohibited and warranty voided.

WARNING:



RISK OF FIRE AND ELECTRICAL SHOCK. FIXTURE MUST BE INSTALLED BY A QUALIFIED ELECTRICIAN ONLY IN ACCORDANCE WITH NATIONAL, LOCAL BUILDING AND ELECTRICAL CODES. DISCONNECT POWER AT ELECTRICAL PANEL BEFORE SERVICING.